



# WASATCH SOFTTRIP® TX FOR TEXTILE PRINTING

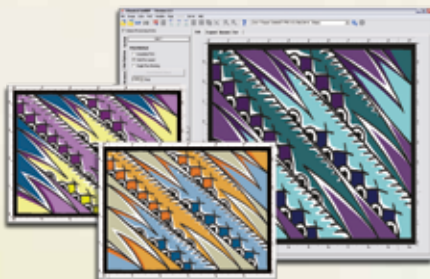
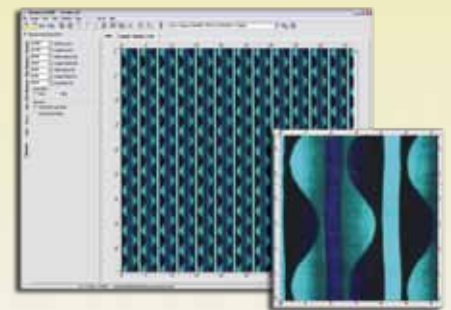
## DIGITAL FABRIC PRINTING TOOLKIT

Developed exclusively for the needs of textile printers, SoftRIP TX is equipped with the tools you need to make your transition to digital printing seamless. With all the functionality of the original SoftRIP print management package, plus specialty features for textile printing, SoftRIP TX provides performance you won't find in any other RIP. Whatever your textile printing goals, you will succeed with Wasatch SoftRIP TX.



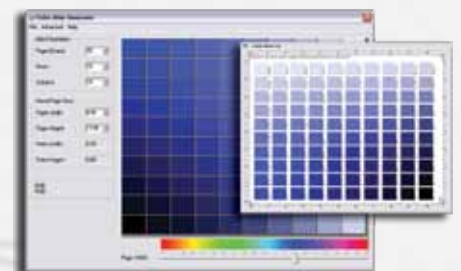
## Efficient Repeats

Creating repeats in your design applications creates huge files and painful processing times. Wasatch SoftRIP TX uses special halftoning and re-sampling algorithms to ensure seamless repeats. And, since you only need to save and RIP a very small file, you save memory on your hard drive. You can even customize your repeats with advanced drop and slide controls.



## Quick Colorways

Developed for the multiple colorways and indexed TIFF files typical of fabric designs, SoftRIP TX allows you to create, view, edit, and manage multiple colorways on screen. With SoftRIP's easy, intuitive interface, you can easily store unlimited colorways for future use.



## Exact Color Atlas Generator

The Color Atlas Generator makes it easy to match colors accurately no matter how complicated your post processing. Simply specify and print a range of color swatches on your target fabric and perform your finishing steps. To reproduce exact colors, pick your desired swatch and enter its RGB value into SoftRIP or your graphics application.

333 South 300 East  
Salt Lake City, UT 84111, USA



+1.801.575.8043  
800.894.1544

www.wasatch.com



# DIGITAL PRINTING EXCELLENCE

## THE #1 RIP FOR TEXTILE PRINTING

"There is a new generation of textile designers emerging from our universities. They are creative, they know what they want, and they are comfortable with new technologies that enable them to be much more productive than previous generations of designers. Wasatch SoftRIP TX is an example of that enabling new technology."

*Professor Hitoshi Ujiie, Philadelphia University, School of Textiles and Materials Technology*

### Textile Features for Great Designs

- Specialized re-sampling and halftoning eliminates seams between repeats
- RIP a single pattern and efficiently repeat it during printing
- Easy tools to manage and even create multiple colorways directly in SoftRIP TX
- Color Database feature lets you maintain your own Color Kitchen of named entries
- Ability to route colors through ICC management or directly to print heads
- Digital Engraving Data uses grayscale LAB TIFF files and lets you specify color prior to composite color output
- Profiling features help you get the most out of your third party color management software

### Easy Color Tools for Great Out-of-the-Box Color

- Thousands of plug-and-play Imaging Configurations for superior out-of-the box color
- Easy-to-use Correction Curves to make color adjustments as you would in standard design applications
- Advanced tools for indexed and spot colors, including a spot color capture tool for handheld colorimeters
- Color control in four different input color spaces to get colors that pop and match SWOP in the same job
- Master Color Transforms flowchart shows users how their color moves from file to printed page
- 16-bit rendering reproduces color with the greatest level of intricacy for high-definition output

### Simple Workflow Features Get You Up and Running Fast

- The ability to drive up to four printers simultaneously allows you to manage any print production environment
- The Digital Tool Kit puts key file preparation tasks on the main screen so you're ready to RIP fast
- Easy workflow options for processing files individually or as part of a complete layout
- Smart Nesting to create media- and time-saving layouts automatically
- Master Queues Manager for tracking the status of your production in real time
- Quick printer setup that requires no previous RIP experience
- Interactive real-time preview and detailed image attribute display allow for accurate image adjustments
- Cropping feature RIPs only selected areas, instead of entire page, speeding up processing

### Advanced Workflow Features Help Power Your Production

- Wasatch Cost Estimator saves you time and money by giving you an accurate view of your costs before you start production
- Hot folders allow you to print directly from any application or operating system
- Wasatch ImageNET™ allows you to print directly from any networked Mac, PC, or Unix workstation
- Automated image rotation increases Smart Nesting media savings
- Direct-to-layout workflow nests new images with RIP'd jobs
- Tiling features allow for easy printing of oversized images
- Archiving lets you save jobs from print queues