



WASATCH SOFTTRIP® SP

FOR SEPARATIONS PRINTING

REVOLUTIONIZING COLOR SEPARATIONS

Offset, Flexography, and Screen Printing

Inkjet printers have revolutionized the production of color separations for screen, flexo, and litho printing. Wasatch software has led the way with the features you need to be successful with this type of printing. Don't settle for second best. SoftRIP SP is the industry's leading solution for color separations via inkjet printer.



Save money with inexpensive inkjet hardware

Today's inkjet printers can produce high quality film output without the cost of traditional imagesetters. Films produced with Wasatch achieve the quality associated with imagesetters at a fraction of the cost.

Take control of your workflow

Removing service bureaus from your workflow reduces lead times while increasing your flexibility to respond to customer needs and react to last minute changes. Screen printers around the world are using SoftRIP SP with inkjet printers to better serve their customers and beat their competition.

Break even on your investment fast

You can purchase inkjet printing hardware and SoftRIP SP for about the same price you'd likely pay your external film service provider in just a few months. Quality results, better service, fast return on investment! What are you waiting for?

Intuitive Precision

Creating films with traditional imagesetting technology requires specific expertise. SoftRIP SP is so easy to learn and easy to use that even beginners with minimal background in film production will produce quality results fast. Advanced users will find all the controls they need to easily apply their expertise with traditional technologies to a digital workflow.

Perfect Moiré-Free Rosettes

Only SoftRIP SP has Wasatch Precision Rosette Screens® that produce perfect center-filled rosettes across the full width of your film using a small or large format digital printer. Our award-winning rosettes and new customizable features combine to deliver a perfect inkjet separations tool that will seamlessly fit into your current workflow.

More Tools More Control

Wasatch is a pioneer in the field of inkjet separations printing. With tools like Hybrid Screens for eliminating yellow moiré, overprint support, and dozens of operator controls, SoftRIP SP is the answer to reaching your color separation printing goals.

the
INDUSTRY-LEADING SOLUTION
for **INKJET FILM**
PRODUCTION

333 South 300 East
Salt Lake City, UT 84111, USA



+1.801.575.8043
800.894.1544

www.wasatch.com

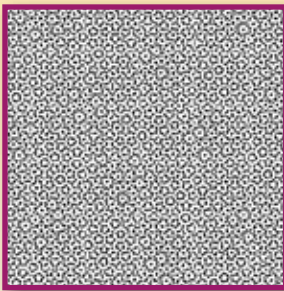


DIGITAL PRINTING EXCELLENCE

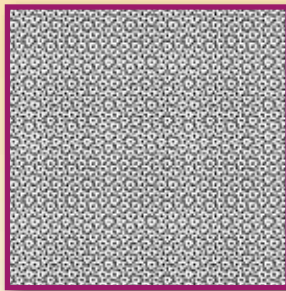
THE NEXT GENERATION IN SEPARATIONS PRINTING

Wasatch SoftRIP SP has everything you need to make high-quality, low-cost separations right out of the box. Beginners will find an easy workflow that they can learn and use quickly. Printing experts will produce unparalleled quality film output with tools for moiré-free rosettes, hybrid rosettes, and more. Whatever your separations printing goals, you will succeed with SoftRIP SP.

WASATCH PRECISION ROSETTE SCREENS®

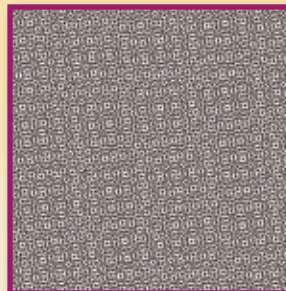


Failed CMK Rosettes
with Moiré

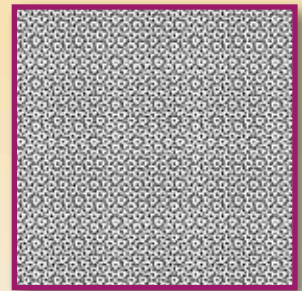


Center-filled Rosettes
without Moiré

PRECISION ROSETTE / STOCHASTIC HYBRID SCREENS



CMYK Rosettes showing
Yellow Moiré



Hybrid Rosette Screens
Eliminate Yellow Moiré

Exclusive Color Separation Tools

Wasatch Precision Rosette Screens® for high-end process color

Precision Rosette/Stochastic Hybrid Screens eliminate 15° yellow moiré while maintaining a traditional rosette appearance

Precision Rosette Hybrid Screens eliminate "highlight breaks" and "plugged holes" in inkjet separations

Support for pre-separated and separate-on-RIP color separation workflows, including support for Overprint

Complete operator control of dot shape, screen angle, and frequency for the creation of custom PostScript™ screens

Controls for stochastic screens dot size adjustment

Negative linearization capability for printing film negatives and custom black channel linearizations

Easy swapping of C, M, and K screen angles

Halftoning capabilities for achieving high UV density and superior dot accuracy

Based on the Industry's leading RIP for Color

The ability to drive up to four printers simultaneously allows you to manage any print production environment

The Digital Tool Kit puts key file preparation tasks on the main screen so you're ready to RIP fast

Quick printer setup that requires no previous RIP experience to complete

Master Queues Manager for tracking the status of your production in real time

Easy workflow options for processing files individually or as part of a complete layout

Wasatch ImageNET™ to print directly from networked Mac, iPad®, PC, or Unix workstations

Smart Nesting to create media and time saving layouts automatically

Precision Stochastic Screens™ halftoning for highest quality output with smooth gradients and fast RIP speeds