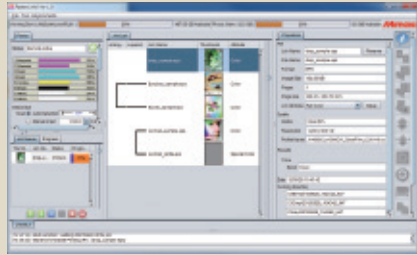


Software RIP combining usability and high performance

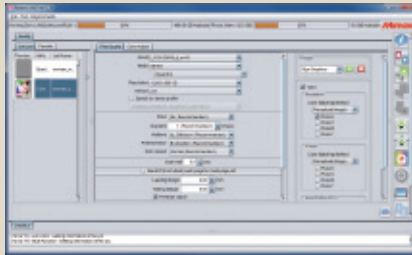
# RasterLink6

\*Bundled Item

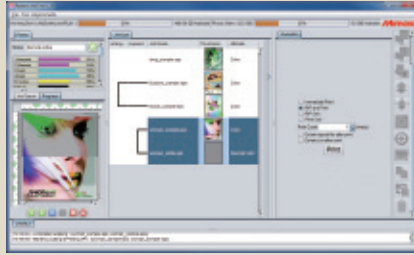
Intuitive and user-friendly operation



1 Basic setting items are indicated by icons, enabling intended operations to be performed intuitively without hesitation.



2 When clicking on the targeted icon, the screen will be changed in the same window. In addition, layout settings can be re-used at any time by implementing "Register as Favorite".



3 When printing, you can visually confirm the job progress on the main screen.

Added convenient functions

Function 1 Layout function as desired

There is no longer a layout constraint in the size adjustment or a copy function for the imposition of several jobs. Three ink layers or copied images are freely laid out if print conditions are same. This function reduces media waste using efficient layout.

Function 2 Multi-profile, simultaneous printing function

Several profiles that match conditions can be simultaneously printed. This is effective for test output when the profile for a target image quality or color requires multiple "profile" test prints. You can select the best profile after actually investigating such an output.

\*To be supported by RasterLink6 program update soon

Supports Web update function.

Supports the Web update function that has been well-received in RasterLinkPro5. Program update and profile download can be easily performed via internet.

## Specifications

Item	JV400-130/160SUV
Head	On-demand Piezo head (Array of 2 heads in-line)
Maximum width	1,361mm (53.6") / 1,610mm (63.4")
Print resolution	600, 900, 1,200dpi
Print speed	Draft 18.1m/h (1,200x900dpi, 6pass, bi-directional, 4 color) Standard 13.4m/h (1,200x1,200dpi, 8pass, bi-directional, 4 color)
Ink	Solvent UV ink SU100 Ink supply system 4 color (C, M, Y, K) 600 ml ink pack
Media	Width Up to 1,371mm (54.0") / 1,620mm (63.8") Weight Up to 25kg (55.1 lbs) Roll diameter Up to $\varnothing$ 180mm (7.1") Inside roll diameter 2-3 inch Print aspect Inside / outside Cutter Y-direction cutter after head section
Drying device	3 way intelligent heater (Pre/Print/Post)
UV curing unit	Equipped with fluorescent UV tube lamp
Media take-up device	Roll take-up device, inside/outside selectable
Interface	USB2.0
Applicable standard	VCCI class A, FCC class A, UL 60950-1 CE Marking (EMC, Low voltage and Machinery directive), CB Report
Power specification	AC 100~120V $\pm$ 10% or AC 200~240V $\pm$ 10%
Power consumption	100 - 120V 220 - 240V 1,440W $\times$ 2 1,800W $\times$ 2
Operational environment	Temperature: 20°C-30°C (68-86 °F); Humidity: 35-65 % RH (non condensing)
Dimensions (WxDxH)	2,630x855x1,435mm (103.5"x33.7"x56.4") / 2,875x855x1,435mm (113.2"x33.7"x56.4")
Weight	241kg (531 lbs.) / 259kg (570 lbs.)

## Supplies

Item		Item No.	Remarks
SU100 ink	Cyan	SU100-C-60	600ml ink pack *
	Magenta	SU100-M-60	
	Yellow	SU100-Y-60	
	Black	SU100-K-60	
Eco cartridge		OPT-J0237	8 cases

\*600 ml ink pack requires eco cartridge (OPT-J0237).  
Eco cartridges can be used repeatedly by replacing ink packs.

## Related Product

New LX100 Latex Ink on board

# JV400-130/160LX

Eco-friendly water-based ink

The water-based "LX100" has very little VOC (Volatile Organic Compound) and does not need special ventilating equipment. This is an eco-friendly ink which reduces the operator's environmental impact.

World's First Latex White Ink

The white ink meets the diverse needs of a signage market with its adaptability to a wide range of printing media including transparent PET, window decoration, shatterproof window film and so on. In addition, the machine comes with an ink circulation system, named MCT\*, which prevents pigment sedimentation and provides stable ink-jetting.

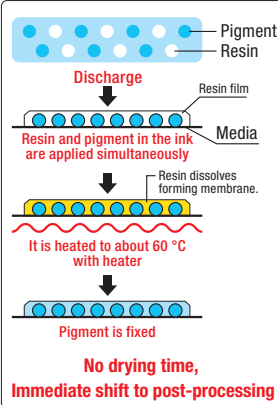
\*MCT = Mimaki Circulation Technology

Available in all scenes outdoors or indoors

Latex ink can print on most medias that are used in eco-solvent machines. Moreover, non-coated media without an acceptance layer, such as paper and cloth, can be printed on as well. This excellent media capability opens the door to many opportunities.



Fixing method of Latex Ink



LX100 ink : C M Y K W

●Some of the samples in this catalogue are artificial renderings. ●Specifications, design and dimensions stated in this catalogue may be subject to change without notice (for technical improvements, etc). ●The corporate names and merchandise names written on this catalogue are the trademark or registered trademark of the respective corporations. ●Inkjet printers print using extremely fine dots, so colors may vary slightly after replacement of the printing heads. Also note that if using multiple printer units, colors could vary slightly from one unit to other unit due to slight individual differences.

i-SUB  
DIGITAL

i-Sub House, Telford Way  
Kettering, Northants, NN16 8UN

Tel: 01536 415511 Fax: 01536 482855  
www.i-subdigital.com



Our factory is certified according to ISO14001:2004

< Solvent UV Ink Model > Wide Format Inkjet Printer

# JV400Series

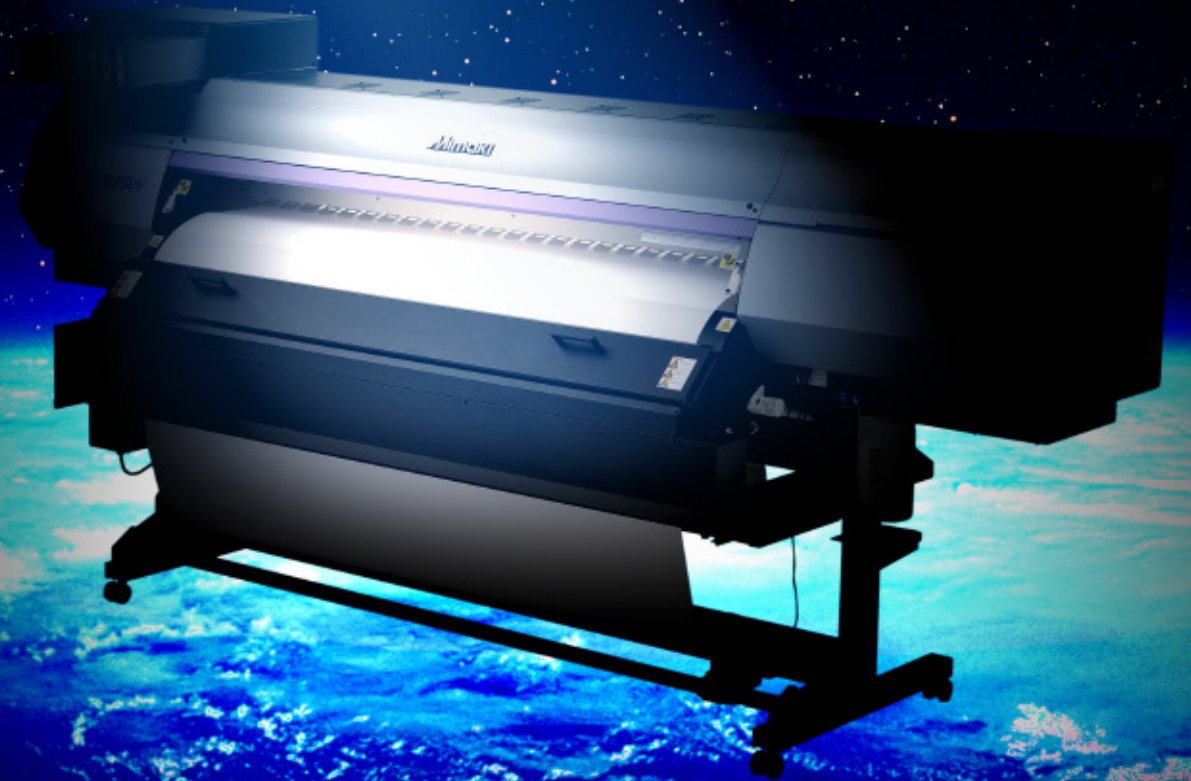
JV400-130SUV / JV400-160SUV

Mimaki  
Product Brochure

New Standard  
The World's First  
Solvent  
UV Ink

Engineered with the latest inkjet technologies

The JV400SUV Series has arrived!



Mimaki Green Technology



# The Solvent UV ink created by Mimaki, experts in the sign industry, opens the gate to a NEW standard.

Mimaki continues to make new advances and developments in the sign industry, and is proud to unveil a new standard for sign manufacturers; Solvent UV. It specializes in printing on "solvent media" such as PVC films and banner materials, thus meeting solvent ink users' desire for “a little more here”

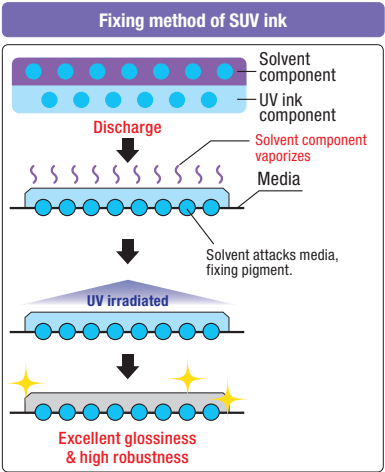
## Advanced ink technology

### Solvent UV ink (SU100)

Solvent UV ink contains a solvent component and a UV ink component. First, the solvent component attacks the acceptance layer of the media, fixing the pigment; the subsequent UV curing assures very high robustness.

**Since printing is directly followed by curing, drying time is eliminated. Secondary processing can be done immediately after printing!**

When using Mimaki Solvent UV Inks, fixation and curing is immediate. It is therefore not necessary to worry about drying times. Immediately after printing, secondary processing, such as lamination, can be performed, dramatically increasing time and efficiency.



### Never-before-seen glossiness

Solvent UV ink contains a solvent component which attacks the acceptance layer of the media, fixing the pigment. It performs UV curing, not when the ink is discharged, but after the pigment is fixed to the media, all while maintaining the vivid color reproduction of solvent ink, resulting in a coating-like smooth glossy print. Signs with solvent UV have a bold and vivid appearance which catches the eyes of passers-by.



### Scratch resistance that everyone desires

A robust UV component remains on the media after UV curing, which provides a surprisingly strong scratch resistance (rub-fastness). Moreover, Solvent UV is equal to or better than solvent ink in weatherability and alcoholic resistance. In cases such as banner materials, where lamination is difficult and often omitted, considerable durability can be expected.

**With SU100 ink**

Scratching 15 times with an eraser

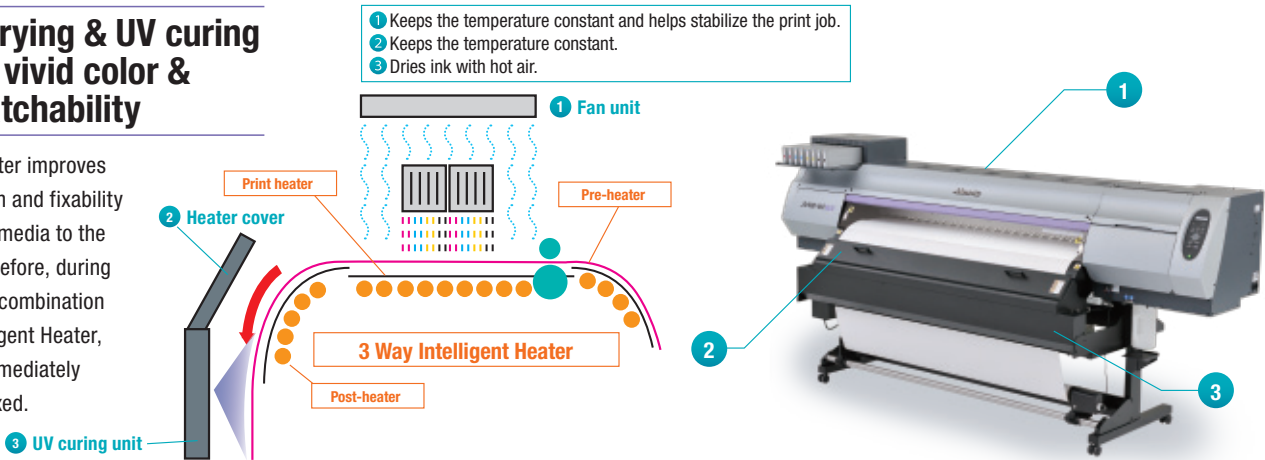
**With current Eco-Solvent ink**

Almost no changes on the printed surface

The image has come off

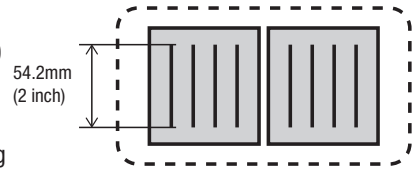
### Improved drying & UV curing devices for vivid color & strong scratchability

3 Way Intelligent Heater improves the color reproduction and fixability of ink by heating the media to the proper temperature before, during and after printing. In combination with the 3 Way Intelligent Heater, the UV curing unit immediately cures the ink to be fixed.

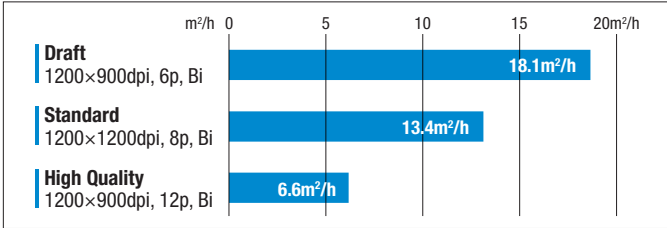


### Feature 1 Newly developed high-speed print heads

Two newly developed print heads with four rows of 320 nozzles per head are arranged in a single line, enabling high-speed printing with top quality results.



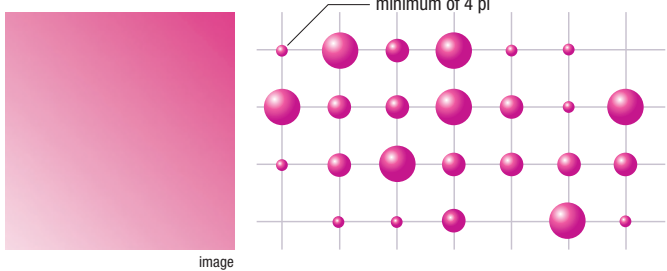
#### JV400 standard quality print speeds



### Feature 2 High quality prints are made available by advanced technology

#### Multiple drop sizes with a minimum size of 4 pl

Depending on the media or output density, the drop sizes of ink from the print head can be selected to a minimum of 4 pl. Multidrop function provides three different drop sizes at once, producing fascinating, non-grainy and smooth printing results. Mimaki's proprietary head control technology realizes an unrivaled high definition & high resolution print.

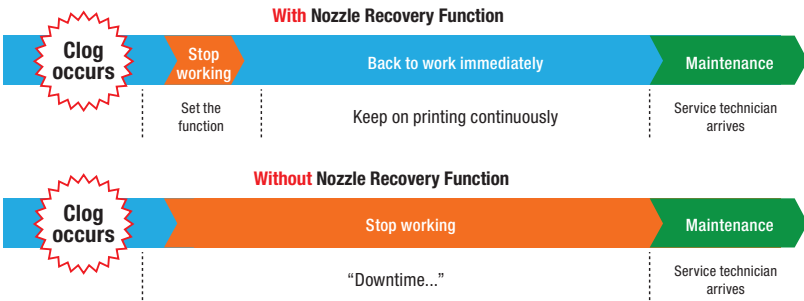


### Feature 3 Fail-safe features for continuous operation

#### Nozzle Recovery Function

Even when nozzle washing has no effect on a troubled nozzle, the print image quality can be recovered temporarily. In this nozzle downtime the printer continues to produce high quality prints till the Mimaki service team arrives.

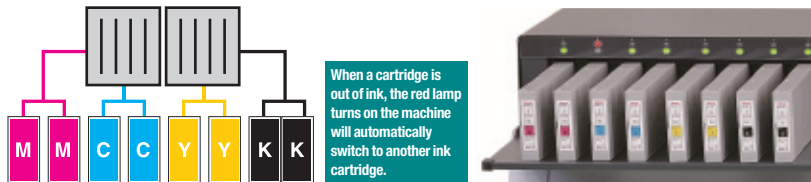
\* Nozzle Recovery Function is a temporary "failure averting function" to continue operation and its recoverability is limited.



#### UISS (Uninterrupted Ink Supply System)

Two ink cartridges per color can be set in 4-color mode. When an ink cartridge runs out, another cartridge of the same color automatically starts supplying ink, preventing the printer from stopping while producing large volumes of output. This feature is especially useful for unattended overnight printing,

\* UISS = Uninterrupted Ink Supply System



#### Eco-cartridge method

Eco-cartridges can be repeatedly used by changing spent ink packs. This eco-cartridge method contributes to waste reduction and can provide ink at lower prices.

\* Ink pack capacity is 600 ml.

