

New generation output software with 16 bit rendering (a standard item)

The high performance RIP software is designed to fully enable all advanced features of the JV33 series printers



RasterLink Pro 4 SG

- 16 bit rendering eliminates tone jump and produces fine colour reproduction
- Different images can be freely nested on the RIP
- Various editing functions support effectively and productively the high print quality
- Able to network in hybrid environments where Windows and Macintosh co-exist

Specifications

Item	Specifications		
	JV33-130	JV33-160	JV33-260
Print head	On-demand Piezo head (180 nozzles x 8 lines) x 1 head		
Maximum printing width	1,361 mm (53.5")	1,610 mm (63.3")	2,632 mm (103.6")
Printing resolution	540, 720, 1440 dpi		
Print Mode (Scan x Feed)	540 x 720 dpi, 540 x 900 dpi, 540 x 1080 dpi		
	720 x 540 dpi, 720 x 720 dpi, 720 x 1080 dpi, 720 x 1440 dpi		
Ink	Type	Exclusive solvent ink: ES3 ink, SS21 ink	
	Capacity	Exclusive aqueous pigment ink	
		Exclusive dye sublimation ink	
Media	Size	1,371 mm (53.9")	1,620 mm (63.9")
	Roll weight	Less than 25 kg (55.1 lbs.)	
	Printing surface	Face out	
Media cutting	Cutting on Y direction by cutter at the head		
Media heater	Triple stage intelligent heater (Pre/Print/Post)		
Media take-up device	Roll take-up device (standard), inside / outside selectable		
Interface	USB 2.0		
Applicable standard	VCCI Class A, FCC Class A, UL 60950-1		
	CE Marking (EMC Directive, low voltage directive), CB report		
Power	AC 100 ~ 120V ± 10%, AC 220 ~ 240V ± 10%, 50/60 Hz ± 1 Hz		
Power consumption	Less than 1,440 VA		
Operating environment	Usable temperature: 20°C ~ 35°C (64 ~ 95°F), Humidity: 35 ~ 65%Rh (no condensation)		
Dimensions (W x D x H)	2,289 x 739 x 1,424 mm (90.1" x 29.1" x 56.1")	2,538 x 739 x 1,424 mm (99.9" x 29.1" x 56.1")	3,650 x 1,302 x 1,424 mm (143.7" x 51.3" x 56.1")
Weight	145 kg (320 lbs.)	160 kg (353 lbs.)	450 kg (992 lbs.)

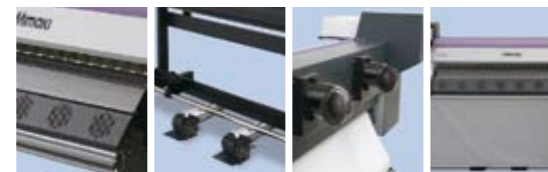
Supplies

Item	Item No.
SS21 Solvent ink	440 cc SPC-0501 Y/M/C/K/LM/LC
	220 cc SPC-0504 Y/M/C/K/LM/LC
	2 litres* SPC-0588 Y/M/C/K/LM/LC
ES3 Eco solvent ink	440 cc SPC-0440 Y/M/C/K/LM/LC
Aqueous pigment ink	220 cc SPC-0494 Y/M/C/K/LM/LC
Sb52 dye sublimation ink**	440 cc SPC-0584NK/K/RK/BL/M/Y/LBL/LM
	2 litres* SPC-0585NK/K/RK/BL/M/Y/LBL/LM
Wiper kit 33S	10 pcs SPA-0134
Waste ink bottle (2L)	1 pc SPA-0117
Cutter blade assy	1 pc SPA-0107
MS cleaning cartridge	220 cc SPC-0294
Head cleaning cartridge	220 cc SPC-0188S

* 2 litre ink packs can be used with the bulk ink system
** Sb52 ink has three types of black ink: Normal black (NK), Deep black (K) and Reddish black (RK)

Option

Item	Item No.
MBIS (Mimaki Bulk Ink System)	JV33-130/160/260 OPT-J0210
Drying and exhaust unit 130	JV33-130 OPT-J0129
Drying and exhaust unit 160	JV33-160 OPT-J0130
Drying fan unit 260	JV33-260 OPT-J0205
Rear fan unit 260	JV33-260 OPT-J0206
LED unit 260 for double sided prints	JV33-260 OPT-J0207
Static-cling prevention sheet kit 260	JV33-260 OPY-J0209



1. Drying fan 2. Exhaust fans 3. Rear fans 4. Exhaust fans
"Drying and exhaust unit" includes all of 1, 2, 3, and 4.



• Some of the samples in this folder are artificial renderings • Specifications, design and dimensions stated in this folder may be subject to change without notice (for technical improvements, etc.) • The corporate and merchandise names written on this folder are the trademark of the respective corporations • Inkjet printers print using extreme fine dots, so colours may vary after replacement of the printing heads, also note that if using multiple printer units, colours could vary slightly from one unit to other unit due to slight individual differences • Compositor's errors reserved

Mimaki is exclusively distributed in the UK & Ireland by:

Hybrid Services Ltd
N° 3, Gateway, Crewe, Cheshire, CW1 6YY
☎ 01270 501 900 info@hybridservices.co.uk
www.hybridservices.co.uk

Authorised Hybrid Reseller:

i-SUB DIGITAL
i-Sub House, Telford Way
Kettering, Northants, NN16 8UN
Tel: 01536 415511 Fax: 01536 482855
www.i-subdigital.com

hybrid
Mimaki Exclusive Distributors



Award winning wide format printer, the JV33 Series

**Superior Performance,
Best Return on Investment**

**SOLVENT
DYE SUB**

**3 SIZES
AVAILABLE**

**1440
DPI**

**4/6
COLOURS**

**18.3 M²/H
TOP SPEED**

**12.7 M²/H
STANDARD**

White Ink

**Unattended
Printing**



* Maximum printing width

MARKET
SIGN GRAPHICS

Expanding business opportunities with innovation

High quality and high speed. Ultimate cost performance achieved by JV33 Series.

Now available in three sizes (137, 162, 264 cm), the award winning JV33 Series offers a superb mix of high quality output, high speed printing, and user friendly operation at an affordable price, achieving the ultimate cost performance.



Wide Format Printer of The Year

The JV33 Series was chosen by the European Digital Press association as "the best wide format solvent printer up to 1.6 m of 2008".



ULTRA-HIGH RESOLUTION AND HIGH SPEED PRINTING

High speed print head for excellent performance

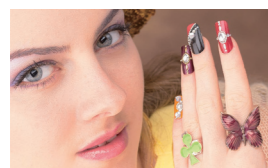
With its increased print head accuracy, the JV33 delivers truly high quality print of 1440 dpi. In addition, the improved ink firing frequency has increased the print speed by 30% over the JV3 series.

Print Speed

Model		High speed mode 540 x 720 dpi 4 pass Bi-directional	Standard mode 540 x 1080 dpi 6 pass Bi-directional	High quality mode 720 x 1440 dpi 8 pass Bi-directional
JV33-260	4 colour	4 pass 18.3	6 pass 12.7	8 pass 7.7
	6 colour	8 pass 9.7	12 pass 6.6	16 pass 3.6
JV33-160	4 colour	4 pass 17.5	6 pass 11.9	8 pass 7.4
	6 colour	8 pass 9.0	12 pass 6.1	16 pass 3.4
JV33-130	4 colour	4 pass 16.7	6 pass 11.4	8 pass 7.1
	6 colour	8 pass 8.6	12 pass 5.8	16 pass 3.2

(unit : m²/hour)

STATE OF THE ART INKJET TECHNOLOGY



Piezo Inkjet system

Precise control of ink firing reproduces details of photo image at a maximum resolution of 1440 dpi. Even edges of 4-point text are printed sharp and clear.

Image of variable dot

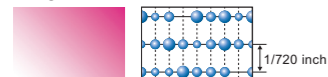
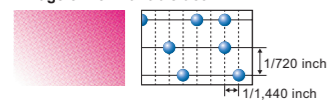


Image of non-variable dot



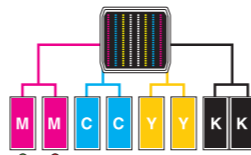
Variable dot technology

By producing dots in three different sizes, smooth high resolution graphics are created without grainy appearance.

Triple stage intelligent heater

A triple stage intelligent heater automatically heats up the media to the appropriate temperature, improving the performance of ink. The mounted post-heater quickens drying time and thus enables a fast take-up of the media.

UNATTENDED CONTINUOUS PRINTING



In case of Magenta / a red light is displayed when a cartridge is out of ink the machine switches automatically to a new cartridge

Uninterrupted Ink Supply System (UISS)

UISS for continuous printing is standard on JV33. The JV33 can utilize two cartridges per colour in 4-colour mode. When an ink cartridge runs out, another cartridge begins supplying ink and helps prevent running out of ink. A maximum of 880 cc ink per colour can be loaded at one time. Ink cartridges can be changed during printing.

* UISS cannot be used in 6-colour mode.



Mimaki Bulk Ink System (MBIS)

for high volumes and lower ink costs (option)

The bulk ink system is an eco-friendly ink system that produces less waste while achieving continuous printing. It uses 2-litre ink packs and achieves as stable and reliable ink ejection as printing solely with cartridges. It is possible to use both 2-litre ink packs in combination with regular 220/440 cc cartridges.

VARIOUS INKS FOR WIDER RANGE OF GRAPHICS

Besides solvent, aqueous inks are also available

The two solvent inks feature high scratch resistance, high density, and wide colour gamut. You may also select aqueous pigment ink or dye sublimation ink at the time of installation.

Solvent ink	Aqueous ink
<p>SS21 Ink</p> <p>Fast drying ink provides the ability of printing on various types of media with high scratch resistance.</p>	<p>ES3 Ink</p> <p>Virtually odorless and user-friendly ink that does not require any special ventilation.</p>
	<p>Pigment Ink</p> <p>Ink which has high light fastness and can reproduce vivid and delicate colour tones.</p>
	<p>Dye Sublimation Ink</p> <p>Fast drying and high density ink for sublimation transfer to polyester substrates.</p>

JV33-260 FUNCTIONS TO MAXIMIZE PRINTING POTENTIAL

Double sided printing

Images on billboard signs are usually dark under daylight because they are printed twice. However, by printing both sides of banner, it is possible to create brighter and more vivid images in any lighting condition.



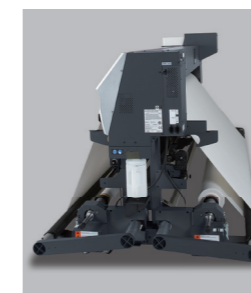
Penetrating light
(natural colour by lighting inside)

Reflective light
(Duplex print)

Printing the same side twice

Automatic Media Feeder (AMF)

The feeding and take-up device can securely feed heavy media up to 100 kg (220 lbs.) with constant tension by means of the tension bar and the winding device. For less wide and lighter media a standard take-up device is also available.

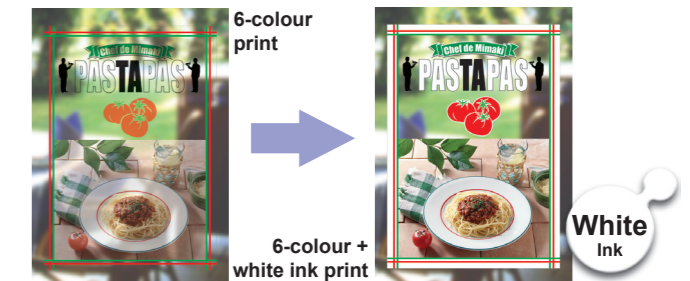


WHITE INK AVAILABLE

Full colour and white ink (SS21)

Producing more vivid graphics

The "White Ink Overlay Print", Mimaki's exclusive innovation, allows for simultaneously white and full colour printing on transparent or opaque substrates, as well as realizes a beautiful finish with accurate overlay.



WIDE RANGE OF APPLICATIONS*

Solvent ink

Backlit signs, floor graphics, labels, posters, vehicle wrap, high quality stickers, window signage.

Dye sublimation ink

Transfer printing on polyester based materials: flags, hanging displays, roll screen, soft signage, sportswear and t-shirts.

Aqueous pigment ink

Indoor graphics.

* Choose either solvent or aqueous ink at the time of installation.

MIMAKI'S ULTIMATE PRINT & CUT SOLUTIONS



Create an efficient print and cut combination with a CG Series cutting plotter.

Sizes: 75 - 160 cm



The CJV30 Series offers printing and cutting in one machine.

Sizes: 60 - 160 cm